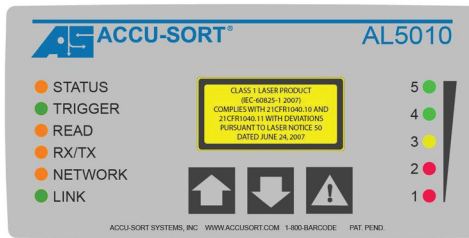


ACCUSORT®

AccuLazr™ AL5010 Mid-Range Laser Barcode Scanner



Highest Read Performance:

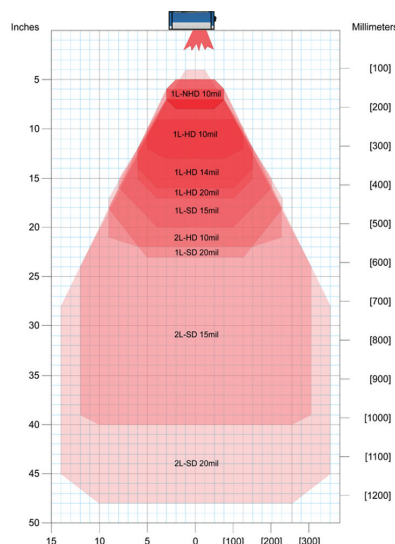
- Largest depth of field of any mid-range laser barcode reader on the market
- Read rate 99.9% for Grade A labels
- Up to 1200 scans per second; better than 2x that of prior one-box mid-range readers
- PackTrack™ advanced tracking allows closer package spacing while maintaining package ID
- Ensures the highest possible read rates on good and poor quality codes

Easiest to Install, Use and Maintain:

- Powerful, intuitive user interface
- Modular Scan Head and Mounting Base
- Interface Modules simplify wiring
- Modularity reduces downtime, simplifies replacement - no need to remember operating parameters!
- Easy "plug and play" replacement

Lowest Total Cost of Ownership:

- Ease of use significantly reduces install time!
- Flexible connectivity: EtherNet/IP, Ethernet TCP/IP, Serial (2) and solid-state I/O (4) all standard on the reader's interface
- Built-in Ethernet (standard RJ45)
- Reliability > 50,000 hours MTBF at 25° C
- No maintenance (no fans or filters)



What if mid-range scanning technology could become smaller, faster, and more accurate?

It just did! The AccuLazr™ AL5010 is Accu-Sort's new line of compact mid-range barcode scanning solutions designed with industrial and manufacturing applications in mind. Housed in a rugged IP65-rated enclosure, the AL5010 series offers high-speed scanning up to 1200 scans per second capable of handling the most demanding applications. All AccuLazr readers include a mounting base and plug-in scan head. The scan head is available in five models for standard, medium, and high density codes. Each model offers standard line or adjustable raster versions, all in the same small housing. No bolt-on fixtures are needed for the raster version.

Sophisticated technology that's easy to use

Although technologically advanced, AL5010 is designed for easy setup and operation. Access the user interface with your web browser, enabling reader setup without the need for installation of software or on-site service. Simply connect to AccuLazr via an Ethernet connection. Specify valid barcodes, groups, and patterns. Define your I/O—including built-in trigger and tach signals and up to four solid-state relays. When complete, save the application settings to the reader and you're ready to go.

Built-in Parameter Storage Modules retain the operating parameters in both the scan head and mounting base. In the event replacement ever becomes necessary, just replace the scan head, and the correct parameters are installed with the push of a button.

Flexible connectivity... including built-in EtherNet/IP... Just one thing resulting in the Lowest Total Cost of Ownership

Use a web browser to configure and monitor your AL5010 readers from anywhere in your facility! You can even access the AccuLazr user interface via the iPhone® and iPad®. The AL5010 provides several barcode data transfer options including: UDP messaging, operation as a TCP/IP client or server, and EtherNet/IP. These features, along with comprehensive real-time performance monitors, make the AL5010 the leading barcode scanning solution in its class.

AccuLazr™ AL5010 Scanning Solutions

Typical AL5010 barcode scanning solutions address these industries and applications:

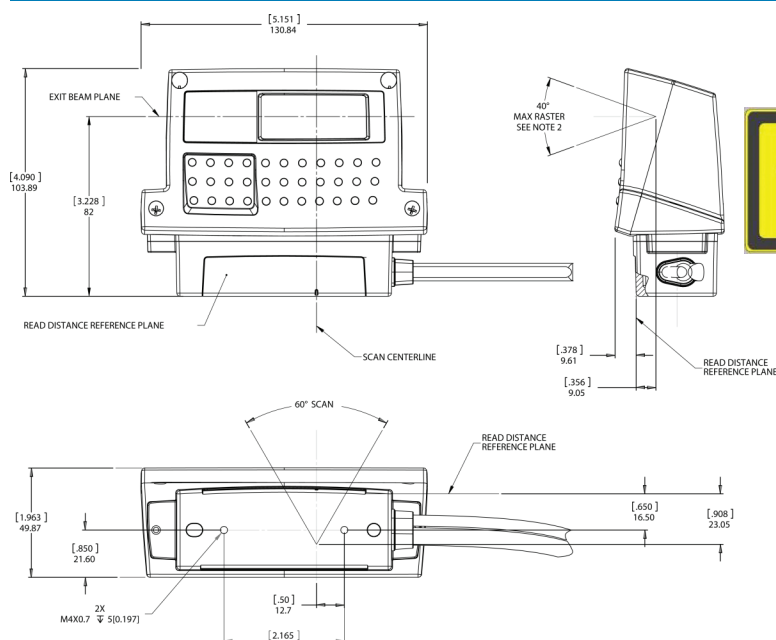
- Parcel/Postal
- Retail Distribution Centers
- Industrial Manufacturing
- Pallet Scanning
- Side-Read Applications
- Pick-and-Pass
- Multi-Sided Scanning Arrays
- Hard-to-Read Barcodes

Photo captions: (from top left) AL5010 bar code reader (front), control panel, AL5010 (back), Read chart shown for 1-laser low-density model. Other models allow reading as close as 76 mm [3"]. On reverse: Modular scan head and mounting base dimensions, range of motion shown with mounting bracket.

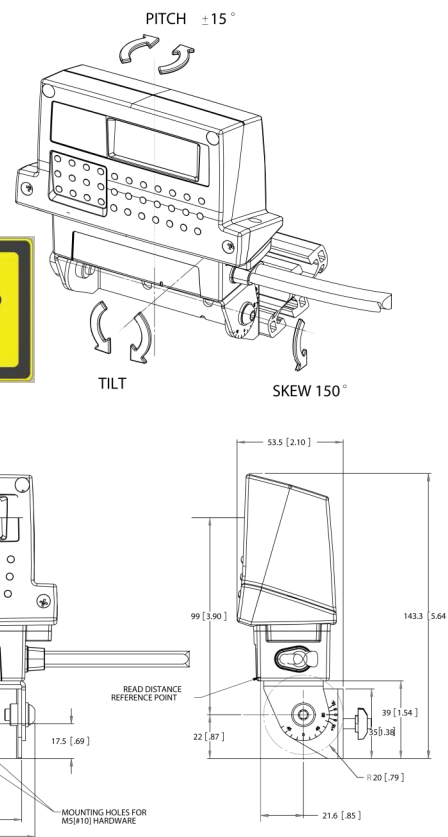
ACCUSORT® SYSTEMS

A brand of
DATALOGIC

AccuLazr™ AL5010 Mid-Range Laser Barcode Scanner



CLASS 1 LASER PRODUCT
(IEC-60825-1 2007)
COMPLIES WITH 21CFR1040.10 AND
21CFR1040.11 WITH DEVIATIONS
PURSUANT TO LASER NOTICE 50
DATED JUNE 24, 2007



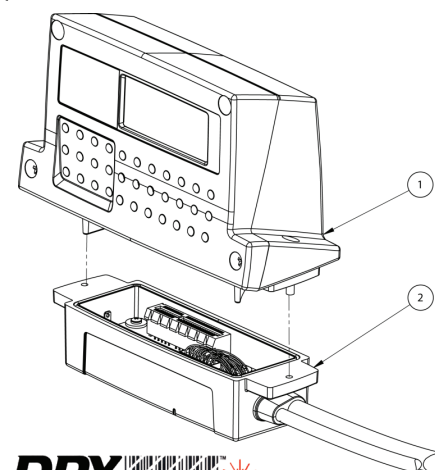
Specifications

Characteristic

Description

Name/Part Number	Mid-Range Laser Barcode Reader, AccuLazr™ AL5010			
(1) Scan Head*	Line Scan Part Number	Min Bar (mil)	Depth of Field mm [inch]	Scans/Second
1 Laser, Standard Density	1000067750	14-20	279.4 [11"]	700-1200
1 Laser, High Density	1000067751	7-13	228.6 [9"]	700-1200
1L, High Density, Near Focus	1000067752	7-13	127.0 [5"]	700-1200
2L, Low Density, High Pitch	1000067753	20+	838.2 [33"]	600/laser
2 Laser, High Density	1000067754	7-13	838.2 [33"]	600/laser
Optional Adjustable Raster	1000071308	Adjustable 20° above and below 0° (center); oscillating mirror		
(2) Mounting Base/Cable	1 meter cable (0111623001); 3 meter cable (0111623002)			
Size	H 104 mm [4.10"] x W 130.8 mm [5.15"] x D 49.9 mm [1.96"]			
Weight	Scan Head: 0.45 kg [1.0 lb] Mounting Bracket: 0.14 kg [0.3 lb] Mounting Base: 0.25-0.34 kg [0.56-0.75 lb]			
Enclosure	Powder-coated cast aluminum, high-impact plastic, rated for IP65			
Temperature	Operating: 0° to +40° C [+32° to +104° F] Storage: -20° to +70° C [-4° to +158° F]			
Relative Humidity	10% - 90% non-condensing			
Laser Type	Visible laser diode 650 nm (Class 1)			
Power Requirement	12-30 VDC (power supplies available from Accu-Sort)			
Power Consumption	< 25W			
Visual Indicators (LEDs)	Status, Trigger, Read, RX/TX, Network, Link; read quality (5 LEDs)			
Barcode Types	All standard 1D symbologies			
Connectors (Mounting Base)	15-pin "D" Scanner connector, RJ45 connector for Ethernet			
Communications	On-board EtherNet/IP, Ethernet TCP/IP, Serial RS232/RS422, 4 programmable I/O relays, DeviceNet, Profibus (see AccuLazr Basic and Enhanced Interface Module datasheets)			
Options	Universal Mounting Bracket (0111620001) Basic and Enhanced Interface Modules (see datasheets)			
Reliability	> 50,000 hours MTBF @ 25° C [77° F]			
Service Options	Installation assistance and on-site training			
Warranty	1-year limited, parts and labor			
Compliance	UL, cUL, FCC (Class A), 21CFR1040, IEC-60825-1, CE			

*Actual performance may vary with configuration and application.



DRX
Decoding Technology by Accu-Sort Systems

For more information about auto-ID and material handling solutions from Accu-Sort Systems, contact us at:

ACCUSORT® SYSTEMS, INC.
511 School House Road
Telford, PA 18969
1-800-BAR-CODE™
info@accusort.com
www.accusort.com

© 2009-2012 Accu-Sort Systems, Inc. All rights reserved. ACCU-SORT, 1-800-BAR-CODE, AccuLazr, DRX and the AS logotype are trademarks or registered trademarks of Accu-Sort Systems, Inc. DATALOGIC and PackTrack are trademarks or registered trademarks of Datalogic S.p.A. Accu-Sort is part of Datalogic Automation, a division of Datalogic S.p.A. iPhone and iPad are registered trademarks of Apple, Inc.

Accu-Sort reserves the right to change specifications without notice.

PN 1000068390 R2.2 | CMS 11-0023 | 2012.04.16 RAY